



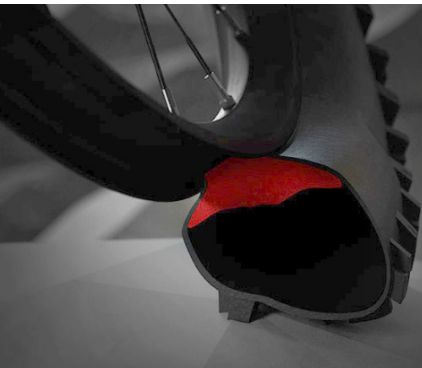
RED POISON

PROTECTIVE SYSTEM FOR TUBELESS TYRES



ABOUT

IT IS AN INNOVATIVE SYSTEM FOR RIDING WITH TUBELESS TYRES THAT GUARANTEES EXCELLENT PERFORMANCE AND ABSOLUTE PROTECTION OF THE RIM AT VERY LOW PRESSURES. WITH RED POISON THE RIDING AND CONTROL OF THE BIKE ARE ENHANCED.



FEATURES

- CUT RESISTANT
- IT DOESN'T CRUMBLE
- IT HAS NO EXPIRATION DATE
- EXTREME LIGHTNESS
- EASY FIT
- 100% MADE IN ITALY

BENEFITS

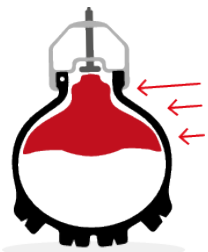
2 SYSTEMS OF USE



Tubeless and tubeless ready use.



Compatible with all types of tyre sealant liquids.



ANTI-DEBEADING

+100%

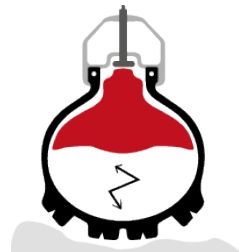
It allows the tyre to be used at much lower pressures, eliminating the problem of tyre debearing.



GRIP

+60%

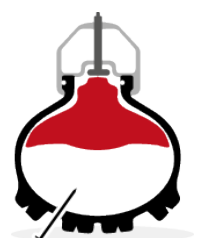
It allows the tyre to be used at much lower pressures, significantly improving the grip of the tyre and the ride feeling.



CONTROL

+70%

It absorbs most of the vibrations, ensuring a smoother, more comfortable and more precise riding.



RUN-FLAT

+80%

It perfectly supports the tyre even in the event of a puncture, allowing to return home without the risk of damaging the rim.



RED POISON

PROTECTIVE SYSTEM FOR TUBELESS TYRES



TECHNOMOUSSE

USE AND PERFORMANCE

AM

ALL MOUNTAIN



FOR LOVERS OF THE LOW-PRESSURE RIDING WITHOUT THE PROBLEM OF DAMAGING THE RIM.

EN

ENDURO



FOR THOSE LOOKING FOR THE MAXIMUM FEELING WITH THEIR BIKE, WITH VERY LOW-PRESSURE PERFORMANCE WITHOUT THE PROBLEM OF DAMAGING THE RIM OR BREAKING THE BEAD.

DH

DOWNHILL



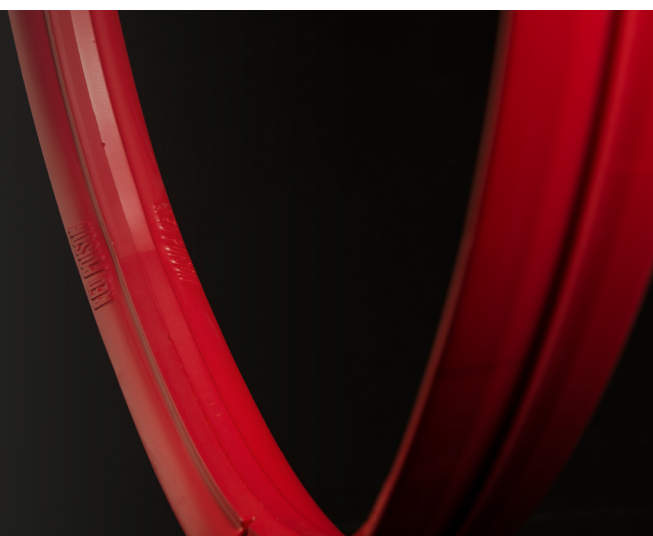
FOR THOSE WHO WISH TO INCREASE THE SENSITIVITY WHEN RIDING WITH THE MAXIMUM PROTECTION OF THE RIM AND WITHOUT THE RISK OF DEBEADING ALSO FOR EXTREME USE.

Weight: +/- 200 gr. per wheel (version 27.5")

COMPATIBILITY

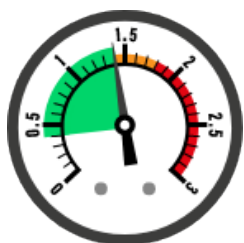
COMPATIBLE WITH 27.5" COVERS FROM 2.35 TO 2.50

COMPATIBLE WITH 29" COVERS FROM 2.35 TO 2.50



PRESSURES

Recommended use pressures.

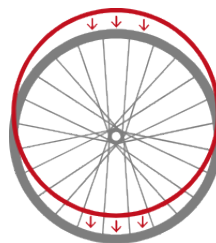


Ø 27,5" 1,4 BAR

Ø 29" 1,4 BAR

INSTALLATION

Assembly is as simple and quick as that of a normal tyre. Once installed it does not require maintenance.



ASSEMBLY IN

60
SECONDS