

# SL1 SMART LOGGER

**WIFI DATA ACQUISITION SYSTEM**  
SISTEMA DI ACQUISIZIONE DATI WIFI



**DATA ACQUISITION SYSTEM**  
SISTEMA DI ACQUISIZIONE DATI



MODEL	P/N
SL1 Smart Logger Wifi	GK-SL1-0001
SL1 Smart Logger	GK-SL1-0002

## INCLUDED IN THE KIT

INCLUSO NEL KIT



GPS ANTENNA



MINI-USB CABLE



CABLE CONNECTOR  
BETWEEN SL1 AND  
GET ECU



WinTAX4 - All Rights Reserved

WINTAX4 GET  
JUNIOR SOFTWARE



LYNXLOG GET  
SOFTWARE

GET SL1 Smart Logger is a compact, lightweight, and robust data acquisition system designed to meet the real demands of motorsport. Its IP67-certified housing makes it resistant to mud, water, vibrations, and impacts, ensuring reliable performance in any race condition, from off-road to track. It features a high-precision GPS, ideal for lap time analysis. With dual CAN-BUS 2.0 ports and digital/analog inputs, it enables seamless connection to ECUs and external sensors, while integrated Wi-Fi simplifies configuration and data download. The package includes WINTAX4 "JUNIOR" software, which transforms collected parameters into actionable insights to optimize setup, riding, and strategy.

GET SL1 Smart Logger è un sistema di acquisizione dati compatto, leggero e robusto, pensato per le esigenze reali del motorsport. La scocca certificata IP67 lo rende resistente a fango, acqua, vibrazioni e urti, garantendo prestazioni affidabili in ogni condizione di gara, dall'off-road alla pista. Integra un GPS ad alta precisione, ideale per l'analisi dei tempi sul giro. Grazie alle due porte CAN-BUS 2.0 e agli ingressi digitali e analogici, consente la connessione di ECU e sensori esterni, mentre il WiFi integrato semplifica configurazione e scarico dati. Incluso il software WINTAX4 "JUNIOR", per trasformare i parametri raccolti in insight immediati e ottimizzare assetto, guida e strategia.

## KEY BENEFITS

PUNTI DI FORZA



2 CAN BUS 2.0  
DUE PORTE CAN 2.0



EXPANDABLE IC AND  
AN INPUTS  
ESPANDIBILE A PIÙ  
INPUT IC E AN



WATER AND DUST  
RESISTANT  
IMPERMEABILE E  
RESISTENTE ALLO  
SPORCO



BUILT-IN GPS  
MODULO GPS  
INTEGRATO

## MAIN FEATURES

### CARATTERISTICHE PRINCIPALI

#### ELECTRICAL SPECIFICATIONS

MAIN POWER SUPPLY INLET	9- 18 VDC
OPTIONAL POWER SUPPLY INLET	5 VDC (mini USB port)
AUXILIARY OUTPUT VOLTAGE (FOR EXT. SENSORS POWER SUPPLY)	5VDC - 70mA max.

#### SYSTEM SPECIFICATIONS

BUILT-IN BACKUP BATTERY	3.7VDC rechargeable LiOn Battery
BUILT- IN MEMORY	7 GB Flash
SYSTEM CLOCK	Built in Real Time Clock (RTC)
BUILT IN GPS CHARACTERISTICS	Sensitivity: 167dB - Update rate:10Hz with ext active antenna
SYSTEM BUILT-IN SENSORS	9-axis Inertial platform
GPS LED STATUS	✓
SYSTEM LED STATUS	✓
LOGGING LED STATUS	✓
GPS ANTENNA CONNECTOR	SMA
CASE TYPE	Plastic Case PA6-GF30 (30% Glass Reinforced, Heat Stabilized, Flame Retardant)
CASE DIMENSIONS	21mm x 62mm x 79mm (without harness and GPS connector)
WEIGHT	≈170g
IP GRADE	IP 67
FIRMWARE UPDATES	✓

#### HARNESS SPECIFICATIONS

SL1 MAIN CABLE	9 poles HRS connector (DF62W-9EP-2.2C) – cable length: 150mm
SL1 EXPANSION CABLE	8 poles JST connector (08T-JWPF-VSLE-D) – cable length: 150mm
SL1 USB CABLE	Sealed Mini USB connector – cable length 500mm

#### STANDARD INPUT PORT SPECIFICATIONS

ANALOG SIGNAL INPUT	3 analog input port (signal range 0-5V)
FREQUENCY INPUT	1 frequency input (frequency range: 0-20kHz)

#### DATA BUS SPECIFICATIONS

CAN PORT	2x High Speed 2.0 ports (125 – 250- 500 kb/s, 1Mb/s)
----------	--

#### CONNECTIVITY

USB 2.0 PORT	✓
WIFI	✓

#### SOFTWARE:

DESKTOP SOFTWARE	LinxLog & WinTAX4 Analysis Software
------------------	-------------------------------------

## ADDITIONAL ACCESSORIES

### ACCESSORI AGGIUNTIVI



WinTAX4 - All Rights Reserved

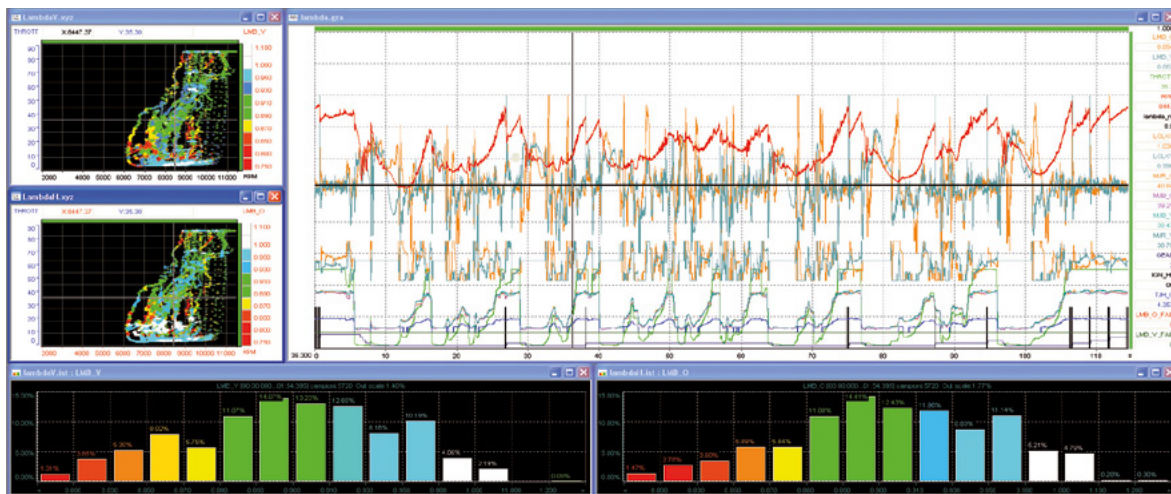
#### WINTAX4 GET USER

WinTAX4 is a complete suite of data analysis tools developed to show vehicle and engine behaviors data, acquired from Data Loggers.

WINTAX4 è un pacchetto completo di strumenti per l'analisi dati che permette di visualizzare parametri di comportamento del motore e del veicolo acquisiti dai dispositivi GET.

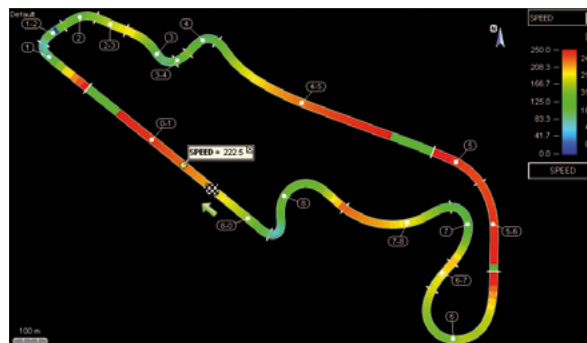
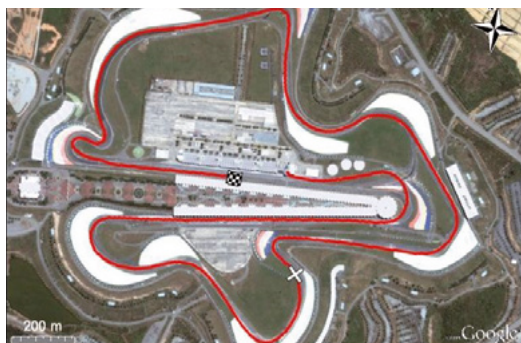
# WINTAX4 GET BY MAGNETI MARELLI

## DATA ANALYSIS SOFTWARE - SOFTWARE DI ANALISI DATI



WINTAX4 is an advanced data analysis platform for professional motorsport, optimized for GET devices. It enables detailed visualization and study of vehicle and engine dynamic parameters acquired through data logging systems. The software manages data flow and organizes it into session-related graphs, accurately integrating information from ECUs and sensors. Its modular structure allows the integration of multiple acquisition sources, supporting development, testing, and engine setup. The intuitive interface provides multi-channel graphs, reports, histograms, and overlay functions with on-board video and Google Earth tracks, ensuring smooth performance and efficiency even in the most complex analyses.

WINTAX4 è una piattaforma avanzata di analisi dati per il motorsport professionale, ottimizzata per dispositivi GET. Consente la visualizzazione e lo studio dettagliato dei parametri dinamici di veicolo e motore, acquisiti dai sistemi di data logging. Il software gestisce il flusso dati e lo organizza in grafici correlati alla sessione, integrando con precisione informazioni da ECU e sensori. La struttura modulare permette l'integrazione di più fonti di acquisizione, supportando sviluppo, collaudo e setup motore. L'interfaccia intuitiva offre grafici multicanale, report, istogrammi e overlay con video on-board e Google Earth, garantendo prestazioni fluide ed efficienza anche in analisi complesse.



**MODEL**

WINTAX4 GET JUNIOR

WINTAX4 GET USER

**P/N**

GK-WINTAX-0002

GK-WINTAX-0001

# FEATURE COMPARISON

## CONFRONTO CARATTERISTICHE



WinTAX4 - All Rights Reserved



WinTAX4 - All Rights Reserved

**FEATURE:**

SOFTWARE INSTALLATION / RUNNING	UNPROTECTED – SINGLE WORKSTATION	Multi workstation - require USB Dongle
MULTI LANGUAGE SUPPORT	Only English	✓ (ENG-ITA-DEU-FRA-JAP)
GRAPH	2 Graph, 16 Channels each one	Unlimited
X-Y GRAPH	1 XY, two channels	Unlimited
XYZ GRAPH	X	✓
HISTOGRAM	1	✓
TRACK	basic track line	✓
MULTIPLE LAPS COMPARISON	Max. 2 Laps	✓
DIFFERENCE MODE LAPS COMPARISON	X	✓
GOOGLE EARTH TRACK OVERLAY	✓	✓
SECTION TIME REPORT	X	✓
LAP REPORT	Single Lap Only	✓
CHANNEL TREND FUNCTION	X	✓
SESSION RUN PREVIEW	✓	✓
DIAGNOSTIC GRAPH	X	✓
GAUGE INDICATORS	X	✓
CHANNEL ALARMS	✓	✓
CHANNEL EVENTS	X	✓
FFT WINDOW	X	✓
MATH CHANNELS	8 Max.	✓
LOOKUP TABLE	X	✓
FFT - RUN AVG FILTERS	X	✓
ASCII IMPORT	X	✓
ASCII EXPORT	X	✓
VIDEO-DATA MANAGEMENT	✓	✓

